



Pullman Court, 65 Drayton Gardens,  
South Kensington, SW10

£2,550 Per Week,

NAPIER WATT

T: 0207 935 0011  
E: [enquiries@napierwatt.co.uk](mailto:enquiries@napierwatt.co.uk)  
W: [napierwatt.co.uk](http://napierwatt.co.uk)

35 Berkeley Square, Mayfair, London, W1J 5BF











## Description

Stunning, three-bedroom penthouse with fantastic views from three balconies. This newly renovated duplex is set on a charming tree-lined street in Kensington and boasts air-conditioning, off-street parking and a lift. This unfurnished penthouse, of approximately 1,677sq ft, comprises a brand new kitchen, guest cloakroom, vast living room with ample space for dining and a study, leading out to a spacious east-facing terrace, along with a west-facing balcony. The top floor of the apartment consists of a master bedroom with en-suite bathroom and a lovely balcony, two further double bedrooms, both en-suite and a utility cupboard. The building is a short walk from South Kensington underground along with all the amenities of the Fulham Road. Available immediately, unfurnished. Photos for indicative purposes only.

3 Double Bedrooms : 3 En-Suites : 3 Balconies : Lift : Off-Street Parking : Air-Conditioning : Royal Borough of Chelsea and Kensington Council Tax Band H

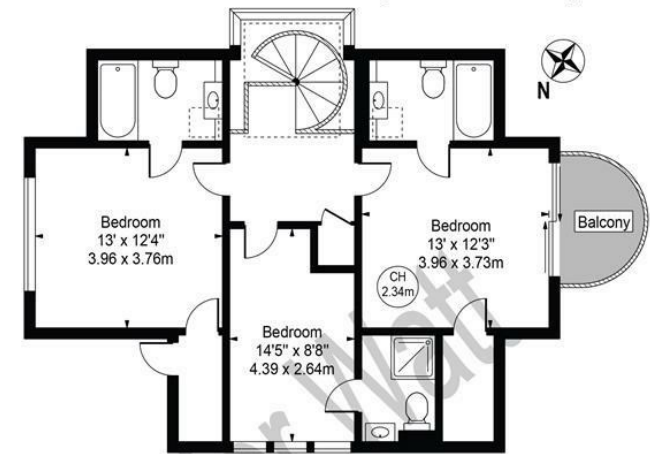
## Key Features

- PENTHOUSE
- LIFT
- ROOF TERRACE
- THREE EN-SUITE BEDROOMS
- AIR-CONDITIONING
- NEWLY RENOVATED
- TWO FURTHER BALCONIES

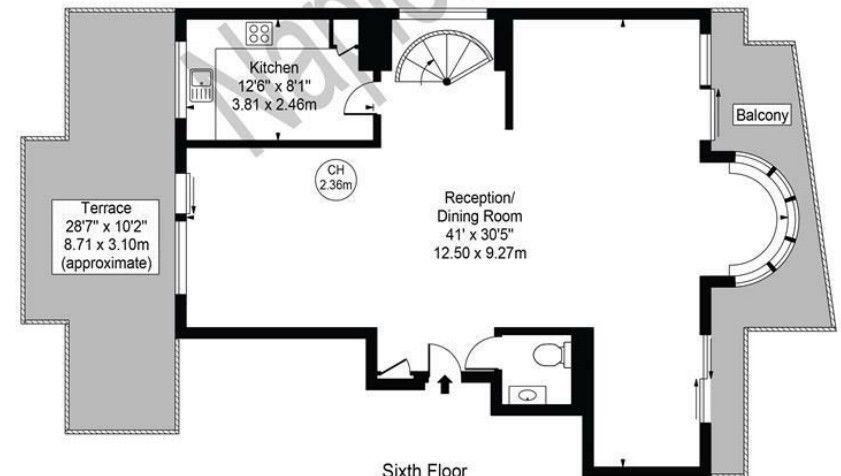
## Terms

Fees & Charges: Tenancies exceeding £100,000 Per annum £480 inc VAT, Tenancies where a company is a tenant £480 Inc VAT.

## Pullman Court Approx. Gross Internal Area 1677 Sq Ft - 155.80 Sq M



Seventh Floor



Sixth Floor  
For Illustration Purposes Only - Not To Scale

This floor plan should be used as a general outline for guidance only and does not constitute in whole or in part an offer or contract. Any intending purchaser or lessee should satisfy themselves by inspection, searches, enquiries and full survey as to the correctness of each statement. Any areas, measurements or distances quoted are approximate and should not be used to value a property or be the basis of any sale or let.

IMPORTANT: We would inform prospective purchasers that these sales particulars have been prepared as a general guide only. A detailed survey has not been carried out, nor the services, appliances and fittings tested. Room sizes should not be relied upon for furnishing purposes and are approximate. If floor plans are included, they are for guidance only and illustration purposes only and may not be to scale. If there are any important matters likely to affect your decision to buy, please contact us before viewing the property.